



# 280 W

MOTORIZATION

**Nr 2 Collector motor**

MATERIAL TO VACUUM

**Liquids**

FILTER TYPE

**Cartridge**

FILTER CLEANING

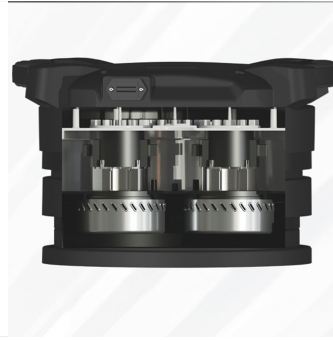
**No**

The 280W is a versatile industrial vacuum cleaner designed for handling liquids and slurries in demanding environments. Equipped with two motors with 2200 W, it ensures an airflow rate of 340 m<sup>3</sup>/h and a vacuum pressure of 230 mBar. The collection system includes a 20-liter filter container metal chips and a 40-liter container for liquids. Ideal for professional applications, it combines high performance with a robust and user-friendly design.

## Features



NEW HEAD  
New and improved head



BY-PASS MOTORS  
Efficient By-pass motors



LIQUID DRAIN  
Integrated drain tube

## Technical specifications

Technical data	280W
MATERIAL TO VACUUM	Liquids
MOTORIZATION	Nr 2 Collector motor
MARKING	-
POWER	2200 W
VOLTAGE	230 V
FREQUENCY	50 / 60 Hz
AMPERAGE	9,6 A
AIR CONSUMPTION	-
AIRFLOW	340 m3/h
DEPRESSION	230 mBar
MAX DEPRESSION	-
SUCTION INLET	Type A Tang. 50 mm
DIMENSIONS	65x56 h120cm
WEIGHT	39
COLLECTION SYSTEM	Filtering bag
COLLECTION CAPACITY	Liquids 50 L / Solids 20 L
LONGOPAC	-
ELECTRIC FLOATER	Included - Automatic Shutdown and Automatic Startup
FILTER CHAMBER DIAMETER	Ø 400 mm
FILTER TYPE	Cartridge
FILTERING MEDIA AND PROPERTIES	Oleophobic Sponge - Class M Hydro-Oleophobic Cartridge
FILTER SURFACE	3.000 cm2
FILTER CLEANING	No
LIQUID EMPTYING	-
FILTER HEPA	-
HEPA FILTERING SURFACE	-