

# BYP 1-20 BASIC ATEX 22

MOTORIZATION

**Nr 1 Collector  
motor**

MATERIAL TO VACUUM

**Dust**

FILTER TYPE

**Star Polyester**



The BYP 1-20 model is a compact, lightweight ATEX vacuum cleaner featuring a brushless by-pass motor. Its small dimensions, combined with its low weight and ease of handling, make it a versatile, convenient, and safe product for use in potentially explosive environments.

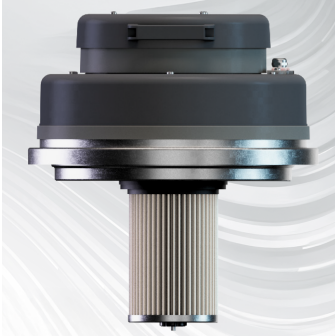
## Features



BY-PASS MOTORS  
**Efficient By-pass motors**



SAFETY  
**Safety cap for transport**



FILTRATION  
**HEPA + antistatic filter**



COLLECTION  
**Disposable filter bag**

## Technical specifications

### Technical data

### BYP 1-20 BASIC ATEX 22

MATERIAL TO VACUUM	Dust
MOTORIZATION	Nr 1 Collector motor
MARKING	Zone 20/22 - 3D Ex h tc IIIB T 135°C Dc
POWER	1100 W
VOLTAGE	230 V
FREQUENCY	50 Hz
AMPERAGE	5 A
AIR CONSUMPTION	-
AIRFLOW	170 m3/h
DEPRESSION	230 mBar
MAX DEPRESSION	-
SUCTION INLET	Type F Tang. 50 mm
DIMENSIONS	55x58x100 cm
WEIGHT	30 Kg
COLLECTION SYSTEM	-
COLLECTION CAPACITY	20 L
LONGOPAC	-
ELECTRIC FLOATER	-
FILTER CHAMBER DIAMETER	Ø 400 mm
FILTER TYPE	Star Polyester
FILTERING MEDIA AND PROPERTIES	HEPA + M Antistatic
FILTER SURFACE	13.000 cm <sup>2</sup>
FILTER CLEANING	-
LIQUID EMPTYING	-
FILTER HEPA	-
HEPA FILTERING SURFACE	-