



D 1100 PRO ATEX 21

MOTORIZATION

Turbine

MATERIAL TO VACUUM

Dust

FILTER TYPE

Cartridge

FILTER CLEANING

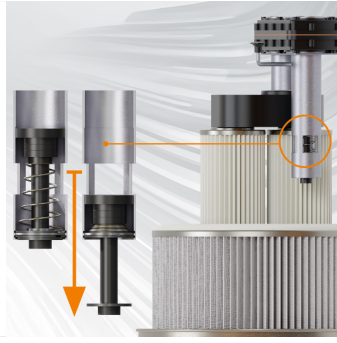
**Semi-Automatic -
Pneumatic Piston**

The filtering features of the D1100 ATEX models combined with our semi-automatic filter cleaning system result in industrial vacuum cleaners that are ideal for all applications where there are large amounts of dust to be removed in any industrial context or production process, reducing cleaning time and benefiting from totally dust-free environments. Particularly robust and effective in harsh environments, the D1100 is one of the most reliable machines on the market.

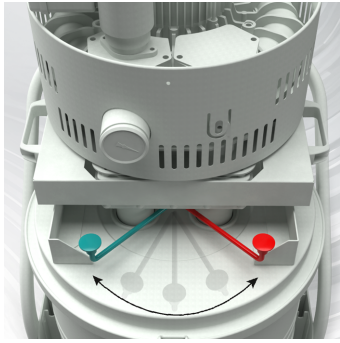
Features



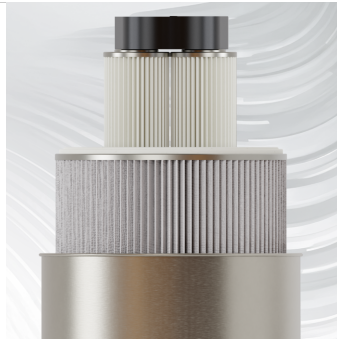
EMPTYING
Collection system with 75L tank



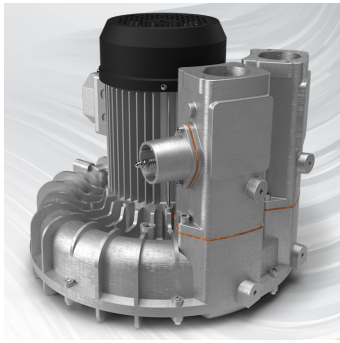
PNEUMATIC-MECHANICAL PISTON
Semi-automatic with pneumatic-mechanical piston.



FILTER CLEANING
Cleaning system with airflow reversal



FILTRATION
Class M primary filter + optional secondary HEPA filter



ENGINE
3,4 - 5,2 KW Turbine available



TANK LIFTING AND RELEASE SYSTEM
Suitable for heavy-duty applications



Technical specifications

Technical data	D 1140 ATEX 21	D 1155 ATEX 21
MATERIAL TO VACUUM	Dust	Dust
MOTORIZATION	Turbine	Turbine
MARKING	Zone 20/21 - II 2D Ex h tb IIIC T135°C Db IP64	Zone 20/21 - II 2D Ex h tb IIIC T135°C Db IP64
POWER	3,4 kW	5,2 kW
VOLTAGE	400 V - 50 Hz 220 – 380 - 480 V – 60 HZ	400 V
FREQUENCY	50 / 60 Hz	50 Hz
AMPERAGE	8,9 A	10,4 A
AIR CONSUMPTION	-	-
AIRFLOW	320 m3/h	560 m3/h
DEPRESSION	320 mBar	320 mBar
MAX DEPRESSION	250 mBar	240 mBar
SUCTION INLET	Type B Tang. 60mm	Type B Tang. 60mm
DIMENSIONS	80x63 h165 cm	80x63 h184 cm
WEIGHT	126 Kg	148 Kg
COLLECTION SYSTEM	Barrel	Barrel
COLLECTION CAPACITY	75 L	75 L
LONGOPAC	-	-
ELECTRIC FLOATER	-	-
FILTER CHAMBER DIAMETER	Ø 460mm	Ø 460mm
FILTER TYPE	Cartridge	Cartridge
FILTERING MEDIA AND PROPERTIES	M Conductive Aluminized	M Conductive Aluminized
FILTER SURFACE	22.000 cm2	22.000 cm2
FILTER CLEANING	Semi-Automatic - Pneumatic Piston	Semi-Automatic - Pneumatic Piston
LIQUID EMPTYING	-	-
FILTER HEPA	Optional	Optional
HEPA FILTERING SURFACE	-	-