



DTX 1500 ICLEAN

MOTORIZATION

Centrifugal Fan

MATERIAL TO VACUUM

Suspension dust

FILTER TYPE

3x Cartridge

FILTER CLEANING

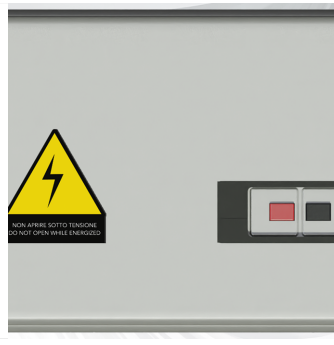
**Automatic
Cleaning**

The DTX 1500 ICLEAN dust extractor is designed for continuous operation and handling large quantities of material. It has a large filtering surface area and is equipped with an automatic filter cleaning system that guarantees a filtering capacity that is always efficient, without interruption of suction. It is particularly suitable for use alongside machines in production.

Features



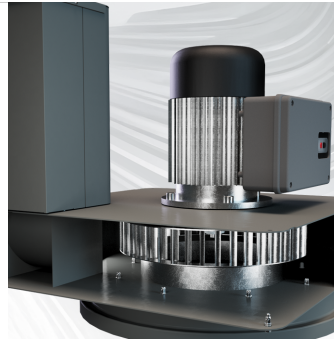
COLLECTION
Collection system with 50L tank



SAFETY
Thermal magnetic circuit breaker



FILTRATION
3-cartridge aluminium filter +
HEPA (optional)



ENGINE
2,2 KW Centrifugal fan

Technical specifications

Technical data	DTX 1500 ICLEAN	DTX 1500 AIR CLEAN	DTX 1500 ICLEAN+AIR
MATERIAL TO VACUUM	Suspension dust	Suspension dust	Suspension dust
MOTORIZATION	Centrifugal Fan	Centrifugal Fan	Centrifugal Fan
MARKING	-	-	-
POWER	2,2 kW	2,2 kW	2,2 kW
VOLTAGE	400 V	400 V	400 V
FREQUENCY	50 Hz	50 Hz	50 Hz
AMPERAGE	6A	6A	6A
AIR CONSUMPTION	-	-	-
AIRFLOW	1500 m3/h	1500 m3/h	1500 m3/h
DEPRESSION	34 mBar	34 mBar	34 mBar
MAX DEPRESSION	-	-	-
SUCTION INLET	Type E Tang. 120mm	Type E Tang. 120mm	Type E Tang. 120mm
DIMENSIONS	80x66 h 188 cm	80x66 h 188 cm	80x66 h 188 cm
WEIGHT	100 Kg	100 Kg	100 Kg
COLLECTION SYSTEM	Barrel	Barrel	Barrel
COLLECTION CAPACITY	50 L	50 L	50 L
LONGOPAC	-	-	-
ELECTRIC FLOATER	-	-	-
FILTER CHAMBER DIAMETER	Ø 460mm	Ø 460mm	Ø 460mm
FILTER TYPE	3x Cartridge	3x Cartridge	3x Cartridge
FILTERING MEDIA AND PROPERTIES	M Conductive	M Conductive	M Conductive
FILTER SURFACE	52.000 cm2	52.000 cm2	52.000 cm2
FILTER CLEANING	Automatic Cleaning	Automatic - Compressed Air	Automatic - Micro Vibration + Compressed Air
LIQUID EMPTYING	-	-	-
FILTER HEPA	Optional	Optional	Optional
HEPA FILTERING SURFACE	-	-	-