



DTX 2500 ICLEAN

MOTORIZATION

Centrifugal Fan

MATERIAL TO VACUUM

Suspension dust

FILTER TYPE

5x Cartridge

FILTER CLEANING

**Automatic
Cleaning**

The DTX 2500 ICLEAN dust extractor is designed for continuous operation and handling large quantities of material. It has a large filtering surface area and is equipped with an automatic filter cleaning system that guarantees a filtering capacity that is always efficient, without interruption of suction. It is particularly suitable for use alongside machines in production.

Features



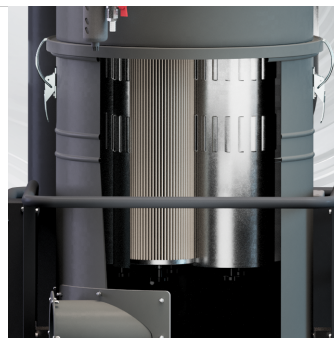
SAFETY
Thermal magnetic circuit breaker



CLEANING SYSTEM
Patented ICLEAN cleaning system



OPTIONAL
Secondary filter HEPA



FILTRATION
5 conductive aluminised M-class cartridges



ENGINE
4 KW Centrifugal fan



EMPTYING
100 litre collection system

Technical specifications

Technical data	DTX 2500 ICLEAN	DTX 2500 AIR CLEAN	DTX 2500 ICLEAN+AIR
MATERIAL TO VACUUM	Suspension dust	Suspension dust	Suspension dust
MOTORIZATION	Centrifugal Fan	Centrifugal Fan	Centrifugal Fan
MARKING	-	-	-
POWER	4 kW	4 kW	4 kW
VOLTAGE	400 V	400 V	400 V
FREQUENCY	50 Hz	50 Hz	50 Hz
AMPERAGE	10A	10A	10A
AIR CONSUMPTION	-	-	-
AIRFLOW	2500 m3/h	2500 m3/h	2500 m3/h
DEPRESSION	43 mBar	43 mBar	43 mBar
MAX DEPRESSION	-	-	-
SUCTION INLET	Type E Tang. 150 mm	Type E Tang. 150 mm	Type E Tang. 150 mm
DIMENSIONS	146 x 84 x h 175 cm	146 x 84 x h 175 cm	146 x 84 x h 175 cm
WEIGHT	260 Kg	260 Kg	260 Kg
COLLECTION SYSTEM	Barrel	Barrel	Barrel
COLLECTION CAPACITY	100 L	100 L	100 L
LONGOPAC	-	-	-
ELECTRIC FLOATER	-	-	-
FILTER CHAMBER DIAMETER	Ø 560 mm	Ø 560 mm	Ø 560 mm
FILTER TYPE	5x Cartridge	5x Cartridge	5x Cartridge
FILTERING MEDIA AND PROPERTIES	M Conductive	M Conductive	M Conductive
FILTER SURFACE	80.000 cm2	80.000 cm2	80.000 cm2
FILTER CLEANING	Automatic Cleaning	Automatic - Compressed Air	Automatic - Micro Vibration + Compressed Air
LIQUID EMPTYING	-	-	-
FILTER HEPA	Optional	Optional	Optional
HEPA FILTERING SURFACE	-	-	-