



# DTX 900 BASIC

MOTORIZATION

**Centrifugal Fan**

MATERIAL TO VACUUM

**Suspension dust**

FILTER TYPE

**Star Polyester**

FILTER CLEANING

**Manual  
Shaking/SemiAuto  
Optional**

The DTX 900 BASIC model is a dust extractor equipped with a 0,75 kW centrifugal fan and a polyester stellar filter. It is characterized by high airflow and low vacuum pressure. Suitable for environments where fine airborne dust is present.

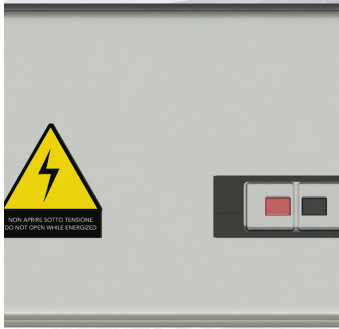
## Features



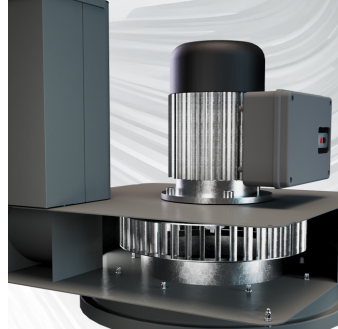
FILTRATION  
Primary stellar polyester filter



COLLECTION  
Collection system with 50L tank



SAFETY  
Thermal magnetic circuit breaker



ENGINE  
Centrifugal fan

## Technical specifications

Technical data	DTX 900 BASIC
MATERIAL TO VACUUM	Suspension dust
MOTORIZATION	Centrifugal Fan
MARKING	-
POWER	0,75 kW
VOLTAGE	400 V
FREQUENCY	50 Hz
AMPERAGE	1,8A
AIR CONSUMPTION	-
AIRFLOW	950 m3/h
DEPRESSION	13 mBar
MAX DEPRESSION	-
SUCTION INLET	Type E Tang. 120mm
DIMENSIONS	-
WEIGHT	-
COLLECTION SYSTEM	Barrel
COLLECTION CAPACITY	50 L
LONGOPAC	-
ELECTRIC FLOATER	-
FILTER CHAMBER DIAMETER	Ø 460mm
FILTER TYPE	Star Polyester
FILTERING MEDIA AND PROPERTIES	L Antistatic
FILTER SURFACE	13.000 cm2
FILTER CLEANING	Manual Shaking/SemiAuto Optional
LIQUID EMPTYING	-
FILTER HEPA	-
HEPA FILTERING SURFACE	-