



HDC 822 ICLEAN

MOTORIZATION

Turbine

MATERIAL TO VACUUM

Very fine dust

FILTER TYPE

8x Cartridge

FILTER CLEANING

**Automatic
Cleaning**

High power three-phase industrial vacuum cleaner. The advantage of this machine is that it has modular power. Motorised with four 5.5 kW motors, its power can be adjusted as required. It finds its ideal use in centralised installations, as having power that can be managed automatically allows considerable savings in energy consumption.

Features



EMPTYING
Collection system with 75L tank



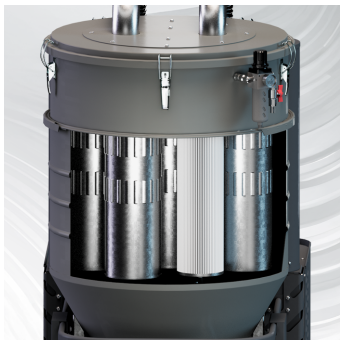
INTERCHANGEABLE
With Longopack continuous bag



ENGINE
4x5,5 KW turbines



SAFETY
Control panel Turbines and cleaning system



FILTRATION
8 conductive HEPA + PTFE cartridge filters



CLEANING SYSTEM
ICLEAN patented cleaning system



INTERCHANGEABLE
With Longopack continuous bag



EMPTYING
160 Lt collection system

Technical specifications

Technical data	HDC 822 P ICLEAN	HDC 822 P AIR CLEAN	HDC 822 P ICLEAN+AIR	HDC 822 S ICLEAN
MATERIAL TO VACUUM	Very fine dust	Very fine dust	Very fine dust	Very fine dust
MOTORIZATION	Turbine	Turbine	Turbine	Turbine
MARKING	-	-	-	-
POWER	4 x 5,5 kW / 22 kW	4 x 5,5 kW / 22 kW	4 x 5,5 kW / 22 kW	4 x 5,5 kW / 22 kW
VOLTAGE	400 V 3P+N+E	400 V 3P+N+E	400 V 3P+N+E	400 V 3P+N+E
FREQUENCY	50 Hz	50 Hz	50 Hz	50 Hz
AMPERAGE	10,4 A	10,4 A	10,4 A	10,4 A
AIR CONSUMPTION	-	-	-	-
AIRFLOW	2.200 m3/h	2.200 m3/h	2.200 m3/h	1.300 m3/h
DEPRESSION	320 mBar	320 mBar	320 mBar	530 mBar
MAX DEPRESSION	250 mBar	250 mBar	250 mBar	450 mBar
SUCTION INLET	Type E Tang. 150mm	Type E Tang. 150mm	Type E Tang. 150mm	Type E Tang. 150mm
DIMENSIONS	170 x 88 h225 cm	170 x 88 h225 cm	170 x 88 h225 cm	170 x 88 h225 cm
WEIGHT	750 Kg	750 Kg	750 Kg	750 Kg
COLLECTION SYSTEM	Barrel	Barrel	Barrel	Barrel
COLLECTION CAPACITY	160 L	160 L	160 L	160 L
LONGOPAC	-	-	-	-
ELECTRIC FLOATER	-	-	-	-
FILTER CHAMBER DIAMETER	Ø 800 mm	Ø 800 mm	Ø 800 mm	Ø 800 mm
FILTER TYPE	8x Cartridge	8x Cartridge	8x Cartridge	8x Cartridge
FILTERING MEDIA AND PROPERTIES	HEPA + PTFE	HEPA + PTFE	HEPA + PTFE	HEPA + PTFE
FILTER SURFACE	152.000 cm2	152.000 cm2	152.000 cm2	152.000 cm2
FILTER CLEANING	Automatic Cleaning	Automatic - Compressed Air	Automatic - Micro Vibration + Compressed Air	Automatic Cleaning
LIQUID EMPTYING	-	-	-	-
FILTER HEPA	-	-	-	-
HEPA FILTERING SURFACE	-	-	-	-

Technical specifications

Technical data	HDC 822 S AIR CLEAN	HDC 822 S ICLEAN+AIR
MATERIAL TO VACUUM	Very fine dust	Very fine dust
MOTORIZATION	Turbine	Turbine
MARKING	-	-
POWER	4 x 5,5 kW / 22 kW	4 x 5,5 kW / 22 kW
VOLTAGE	400 V 3P+N+E	400 V 3P+N+E
FREQUENCY	50 Hz	50 Hz
AMPERAGE	10,4 A	10,4 A
AIR CONSUMPTION	-	-
AIRFLOW	1.300 m3/h	1.300 m3/h
DEPRESSION	530 mBar	530 mBar
MAX DEPRESSION	450 mBar	450 mBar
SUCTION INLET	Type E Tang. 150mm	Type E Tang. 150mm
DIMENSIONS	170 x 88 h225 cm	170 x 88 h225 cm
WEIGHT	750 Kg	750 Kg
COLLECTION SYSTEM	Barrel	Barrel
COLLECTION CAPACITY	160 L	160 L
LONGOPAC	-	-
ELECTRIC FLOATER	-	-
FILTER CHAMBER DIAMETER	Ø 800 mm	Ø 800 mm
FILTER TYPE	8x Cartridge	8x Cartridge
FILTERING MEDIA AND PROPERTIES	HEPA + PTFE	HEPA + PTFE
FILTER SURFACE	152.000 cm2	152.000 cm2
FILTER CLEANING	Automatic - Compressed Air	Automatic - Micro Vibration + Compressed Air
LIQUID EMPTYING	-	-
FILTER HEPA	-	-
HEPA FILTERING SURFACE	-	-