



PN BAG

MOTORIZATION

Venturi

MATERIAL TO VACUUM

Dust

FILTER TYPE

Cartridge

FILTER CLEANING

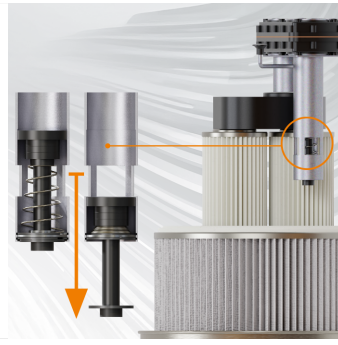
**Semi-Automatic -
Pneumatic Piston**

The PN BAG ATEX model is a vacuum cleaner equipped with a Longopac continuous bag discharge system, featuring a compressed air suction system that uses a Venturi tube and has no electric motor. For this reason, it is particularly suitable for use in an ATEX environment due to the absence of possible accidental ignition sources.

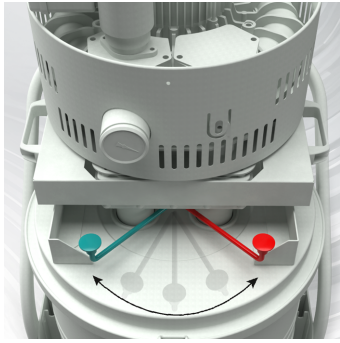
Features



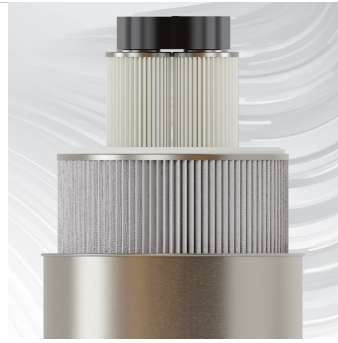
EMPTYING
Longopack bag 45 metres



PNEUMATIC-MECHANICAL PISTON
Semi-automatic with pneumatic-mechanical piston.



FILTER CLEANING
Cleaning system with airflow reversal



FILTRATION
Class M primary filter + optional secondary HEPA filter



ENGINE
Venturi tube



SAFETY
Vulkollan® membrane for filter and filter chamber

Technical specifications

Technical data	PN BAG	PN BAG ATEX 2-22	PN BAG ATEX 1-21
MATERIAL TO VACUUM	Dust	Dust	Dust
MOTORIZATION	Venturi	Venturi	Venturi
MARKING	-	Zone 20/22 - II 3GD Ex h IIB T6(T85°C) Gc - Ex h IIIC T60°C Dc	Zone 20/21 - II 2GD Ex h IIB T6 (T85°C) Gb - Ex h IIIC T60°C Db
POWER	4 – 6 Bar	4 – 6 Bar	4 – 6 Bar
VOLTAGE	-	-	-
FREQUENCY	-	-	-
AMPERAGE	-	-	-
AIR CONSUMPTION	1500 l/min	1500 l/min	1500 l/min
AIRFLOW	380 m3/h	380 m3/h	380 m3/h
DEPRESSION	280 mBar	280 mBar	280 mBar
MAX DEPRESSION	380 mBar	380 mBar	380 mBar
SUCTION INLET	Type B Tang. 60mm	Type B Tang. 60mm	Type B Tang. 60mm
DIMENSIONS	80x60 h155 cm	80x60 h155 cm	80x60 h155 cm
WEIGHT	75 Kg	75 Kg	75 Kg
COLLECTION SYSTEM	Barrel	Barrel	Barrel
COLLECTION CAPACITY	75 L	75 L	75 L
LONGOPAC	Si	Si	Si
ELECTRIC FLOATER	-	-	-
FILTER CHAMBER DIAMETER	Ø 460mm	Ø 460mm	Ø 460mm
FILTER TYPE	Cartridge	Cartridge	Cartridge
FILTERING MEDIA AND PROPERTIES	M Conductive Aluminized	M Conductive Aluminized	M Conductive Aluminized
FILTER SURFACE	22.000 cm2	22.000 cm2	22.000 cm2
FILTER CLEANING	Semi-Automatic - Pneumatic Piston	Semi-Automatic - Pneumatic Piston	Semi-Automatic - Pneumatic Piston
LIQUID EMPTYING	-	-	-
FILTER HEPA	Optional	Optional	Optional
HEPA FILTERING SURFACE	-	-	-