



# SD PN

MOTORIZATION

**Venturi**

MATERIAL TO VACUUM

**Dust**

FILTER TYPE

**Cartridge**

FILTER CLEANING

**Semi-Automatic -  
Pneumatic Piston**

The SD PN ATEX model is a vacuum cleaner suitable for various uses, characterised by a compressed air suction system that uses a Venturi tube and has no electric motor. For this reason, it is particularly suitable for use in an ATEX environment due to the absence of possible accidental ignition sources.

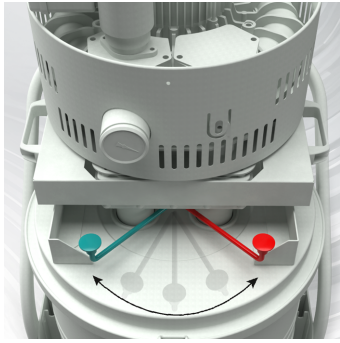
## Features



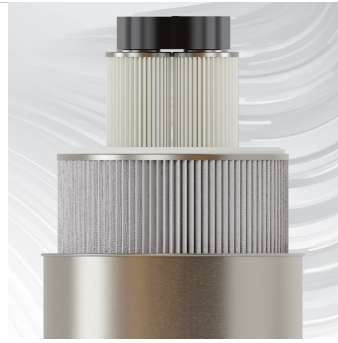
**COLLECTION**  
Collection system with 50L tank



**PNEUMATIC-MECHANICAL PISTON**  
Semi-automatic with pneumatic-mechanical piston.



**FILTER CLEANING**  
Cleaning system with airflow reversal



**FILTRATION**  
Class M primary filter + optional secondary HEPA filter



**ENGINE**  
Venturi tube



**SAFETY**  
Vulkollan® membrane for filter and filter chamber



## Technical specifications

Technical data	SD PN	SD PN ATEX 2-22	SD PN ATEX 1-21
MATERIAL TO VACUUM	Dust	Dust	Dust
MOTORIZATION	Venturi	Venturi	Venturi
MARKING	-	Zone 20/22 - II 3GD Ex h IIB T6(T85°C) Gc - Ex h IIIC T60°C Dc	Zone 20/21 - II 2GD Ex h IIB T6 (T85°C) Gb - Ex h IIIC T60°C Db
POWER	4 – 6 Bar	4 – 6 Bar	4 – 6 Bar
VOLTAGE	-	-	-
FREQUENCY	-	-	-
AMPERAGE	-	-	-
AIR CONSUMPTION	1500 l/min	1500 l/min	1500 l/min
AIRFLOW	380 m3/h	380 m3/h	380 m3/h
DEPRESSION	280 mBar	280 mBar	280 mBar
MAX DEPRESSION	380 mBar	380 mBar	380 mBar
SUCTION INLET	Type B Tang. 60mm	Type B Tang. 60mm	Type B Tang. 60mm
DIMENSIONS	80x60 h155 cm	80x60 h155 cm	80x60 h155 cm
WEIGHT	75 Kg	75 Kg	75 Kg
COLLECTION SYSTEM	Barrel	Barrel	Barrel
COLLECTION CAPACITY	75 L	75 L	75 L
LONGOPAC	-	-	-
ELECTRIC FLOATER	-	-	-
FILTER CHAMBER DIAMETER	Ø 460mm	Ø 460mm	Ø 460mm
FILTER TYPE	Cartridge	Cartridge	Cartridge
FILTERING MEDIA AND PROPERTIES	M Conductive Aluminized	M Conductive Aluminized	M Conductive Aluminized
FILTER SURFACE	22.000 cm2	22.000 cm2	22.000 cm2
FILTER CLEANING	Semi-Automatic - Pneumatic Piston	Semi-Automatic - Pneumatic Piston	Semi-Automatic - Pneumatic Piston
LIQUID EMPTYING	-	-	-
FILTER HEPA	Optional	Optional	Optional
HEPA FILTERING SURFACE	-	-	-