



SMART 240 WD

MOTORIZATION

**Nr 2 Collector
motor**

MATERIAL TO VACUUM

Dust and liquids

FILTER TYPE

Cartridge

FILTER CLEANING

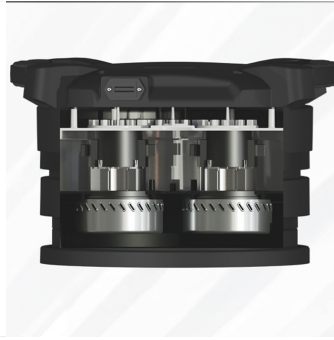
**Semi-Automatic -
Button**

The SMART 240 WD professional vacuum cleaner is the first professional vacuum cleaner capable of sucking up liquids without having to remove the dust filter which always remains mounted. Another innovative solution for the vacuuming of liquids consists in the presence of an electric floater, which allows the automatic shutdown of the vacuum cleaner when the maximum level is reached. The possibility of vacuuming liquids does not affect the performance of dust vacuuming, in fact this vacuum is equipped with a class M filter, and, as standard, a semi-automatic system for cleaning the filter. All these features allow the adaptability of this vacuum cleaner to various sectors, from construction to the food or pharmaceutical industry.

Features



NEW HEAD
New and improved head



BY-PASS MOTORS
Efficient By-pass motors



LIQUID DRAIN
Integrated drain tube

Technical specifications

Technical data	SMART 240 WD
MATERIAL TO VACUUM	Dust and liquids
MOTORIZATION	Nr 2 Collector motor
MARKING	-
POWER	2200 W
VOLTAGE	230 V
FREQUENCY	50 / 60 Hz
AMPERAGE	9,6 A
AIR CONSUMPTION	-
AIRFLOW	340 m3/h
DEPRESSION	230 mBar
MAX DEPRESSION	-
SUCTION INLET	Type A Tang. 60 mm
DIMENSIONS	52X43 h110cm
WEIGHT	25
COLLECTION SYSTEM	Barrel
COLLECTION CAPACITY	40 L
LONGOPAC	-
ELECTRIC FLOATER	Included - Automatic shutdown
FILTER CHAMBER DIAMETER	Ø 400 mm
FILTER TYPE	Cartridge
FILTERING MEDIA AND PROPERTIES	M Conductive Aluminized
FILTER SURFACE	9.000 cm2
FILTER CLEANING	Semi-Automatic - Button
LIQUID EMPTYING	-
FILTER HEPA	-
HEPA FILTERING SURFACE	-