



ST PRO

MOTORIZATION

Turbine

MATERIAL TO VACUUM

Dust and liquids

FILTER TYPE

Cartridge

FILTER CLEANING

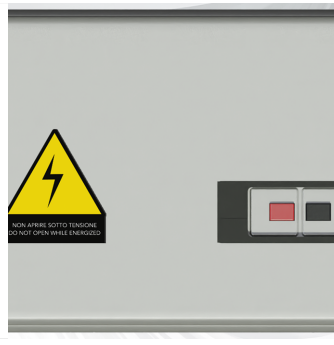
**Semi-Automatic -
Pneumatic Piston**

Motorised wet/dry vacuums with side channel turbine suitable for continuous use, even 24 hours a day. Multipurpose and multifunctional vacuum cleaners are able to vacuum dust and liquids without the need to remove the filter. Designed to meet all the needs of industry and ideal partners for general or specific machine cleaning thanks to their flexibility.

Features



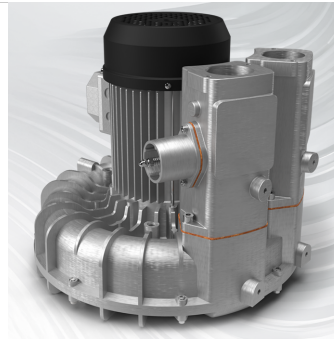
COLLECTION
Collection system with 50L tank



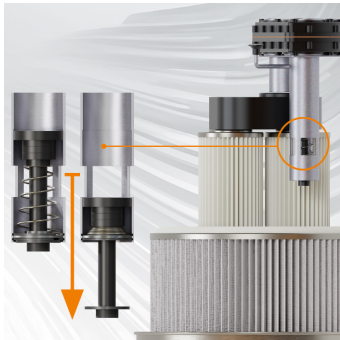
SAFETY
Thermal magnetic circuit breaker



EMPTYING
Collection system with 75L tank



ENGINE
2,2 - 3 - 4 KW Turbine available



PNEUMATIC-MECHANICAL PISTON
Semi-automatic with pneumatic-mechanical piston.



FILTRATION
Class M primary filter + optional secondary HEPA filter

Technical specifications

Technical data	ST 22	ST 3	ST 4	ST 22 MAXI
MATERIAL TO VACUUM	Dust and liquids	Dust and liquids	Dust and liquids	Dust
MOTORIZATION	Turbine	Turbine	Turbine	Turbine
MARKING	-	-	-	-
POWER	2,2 kW	3 kW	4 kW	2,2 kW
VOLTAGE	230 V 1P+E	400 V 3P+E	400 V 3P+E	230 V 1P+E
FREQUENCY	50 Hz	50 Hz	50/60 Hz	50 Hz
AMPERAGE	16 A	6,7 A	8,9 A - 17 A 9,8 A - 8,9 A	16 A
AIR CONSUMPTION	-	-	-	-
AIRFLOW	320 m3/h	320 m3/h	320 m3/h – 50 Hz 405 m3/h – 60 Hz	320 m3/h
DEPRESSION	300 mBar	320 mBar	320 mBar – 50 Hz 380 mBar - 60 Hz	300 mBar
MAX DEPRESSION	200 mBar	250 mBar	250 mBar	200 mBar
SUCTION INLET	Type B Tang. 60 mm	Type B Tang. 60 mm	Type B Tang. 60 mm	Type B Tang. 60 mm
DIMENSIONS	79x61 h135 cm	79x61 h135 cm	79x61 h135 cm	79x61 h147 cm
WEIGHT	88 Kg	88 Kg	88 Kg	89 Kg
COLLECTION SYSTEM	Barrel	Barrel	Barrel	Barrel
COLLECTION CAPACITY	50 L	50 L	50 L	50 L
LONGOPAC	-	-	-	-
ELECTRIC FLOATER	-	-	-	-
FILTER CHAMBER DIAMETER	Ø 460mm	Ø 460mm	Ø 460mm	Ø 460mm
FILTER TYPE	Cartridge	Cartridge	Cartridge	Cartridge
FILTERING MEDIA AND PROPERTIES	M Conductive Aluminized	M Conductive Aluminized	M Conductive Aluminized	M Conductive Aluminized
FILTER SURFACE	13.000 cm2	13.000 cm2	13.000 cm2	18.000 cm2
FILTER CLEANING	Semi-Automatic - Pneumatic Piston	Semi-Automatic - Pneumatic Piston	Semi-Automatic - Pneumatic Piston	Semi-Automatic - Pneumatic Piston
LIQUID EMPTYING	-	-	-	-
FILTER HEPA	Optional	Optional	Optional	Optional
HEPA FILTERING SURFACE	-	-	-	-

Technical specifications

Technical data	ST 3 MAXI	ST 4 MAXI
MATERIAL TO VACUUM	Dust	Dust
MOTORIZATION	Turbine	Turbine
MARKING	-	-
POWER	3 kW	4 kW
VOLTAGE	400 V 3P+E	400 V 3P+E
FREQUENCY	50 Hz	50/60 Hz
AMPERAGE	6,7 A	8,9 A - 17 A 9,8 A - 8,9 A
AIR CONSUMPTION	-	-
AIRFLOW	320 m3/h	320 m3/h – 50 Hz 405 m3/h – 60 Hz
DEPRESSION	320 mBar	320 mBar – 50 Hz 380 mBar - 60 Hz
MAX DEPRESSION	250 mBar	250 mBar
SUCTION INLET	Type B Tang. 60 mm	Type B Tang. 60 mm
DIMENSIONS	79x61 h147 cm	79x61 h147 cm
WEIGHT	89 Kg	89 Kg
COLLECTION SYSTEM	Barrel	Barrel
COLLECTION CAPACITY	50 L	50 L
LONGOPAC	-	-
ELECTRIC FLOATER	-	-
FILTER CHAMBER DIAMETER	Ø 460mm	Ø 460mm
FILTER TYPE	Cartridge	Cartridge
FILTERING MEDIA AND PROPERTIES	M Conductive Aluminized	M Conductive Aluminized
FILTER SURFACE	18.000 cm2	18.000 cm2
FILTER CLEANING	Semi-Automatic - Pneumatic Piston	Semi-Automatic - Pneumatic Piston
LIQUID EMPTYING	-	-
FILTER HEPA	Optional	Optional
HEPA FILTERING SURFACE	-	-