



ST PRO ATEX 21

MOTORIZATION

Turbine

MATERIAL TO VACUUM

Dust

FILTER TYPE

Cartridge

FILTER CLEANING

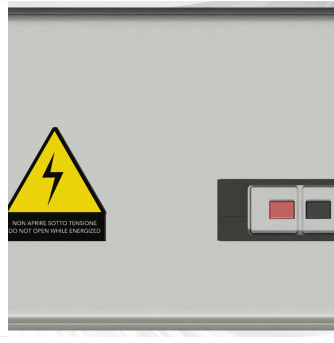
**Semi-Automatic -
Pneumatic Piston**

Wet/dry vacuum cleaners with side channel turbine suitable for continuous use, even 24 hours a day. Multipurpose and multifunctional vacuum cleaners are able to vacuum dust and liquids without the need to remove the filter. Designed to meet all the needs of industry, they are ideal partners for general or specific machine cleaning thanks to their flexibility.

Features



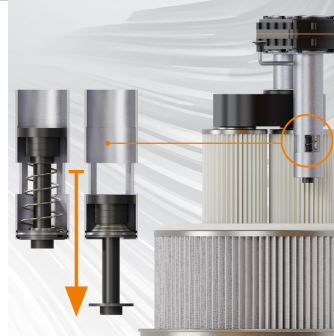
COLLECTION
Collection system with 50L tank



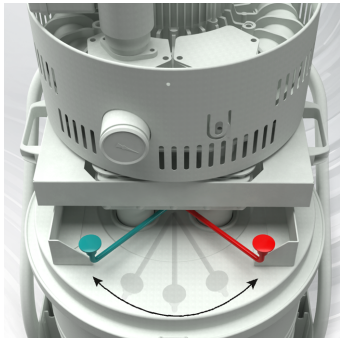
SAFETY
Thermal magnetic circuit breaker



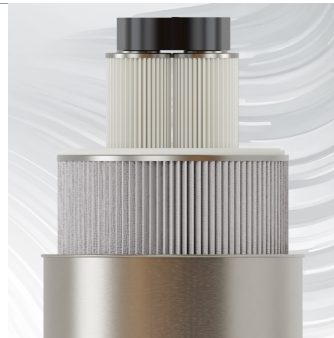
ENGINE
2,2 - 3 - 4 KW Turbine available



PNEUMATIC-MECHANICAL PISTON
Semi-automatic with pneumatic-mechanical piston.



FILTER CLEANING
Cleaning system with airflow reversal



FILTRATION
Class M primary filter + optional secondary HEPA filter



Technical specifications

Technical data	ST 4 MAXI ATEX 21
MATERIAL TO VACUUM	Dust
MOTORIZATION	Turbine
MARKING	Zone 20/21 - II 2D Ex h tb IIIC T135°C Db IP64
POWER	3,4 kW
VOLTAGE	400 V
FREQUENCY	50 / 60 Hz
AMPERAGE	8,9 A
AIR CONSUMPTION	-
AIRFLOW	320 m3/h
DEPRESSION	320 mBar
MAX DEPRESSION	220 mBar
SUCTION INLET	Type B Tang. 60mm
DIMENSIONS	85x60 h145 cm
WEIGHT	89 Kg
COLLECTION SYSTEM	Barrel
COLLECTION CAPACITY	50 L
LONGOPAC	-
ELECTRIC FLOATER	-
FILTER CHAMBER DIAMETER	Ø 460mm
FILTER TYPE	Cartridge
FILTERING MEDIA AND PROPERTIES	M Antistatic
FILTER SURFACE	18.000 cm2
FILTER CLEANING	Semi-Automatic - Pneumatic Piston
LIQUID EMPTYING	-
FILTER HEPA	Optional
HEPA FILTERING SURFACE	-