



STD PRO ATEX 21

MOTORIZATION

Turbine

MATERIAL TO VACUUM

Dust

FILTER TYPE

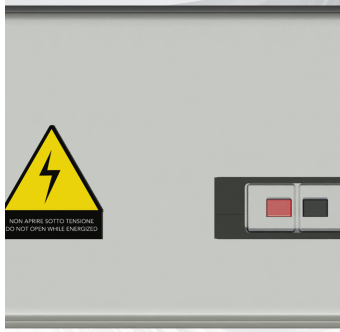
Cartridge

FILTER CLEANING

**Semi-Automatic -
Pneumatic Piston**

The filtering features of the STD ATEX models combined with our semi-automatic filter cleaning system result in industrial vacuum cleaners that are ideal for all applications where there are large amounts of dust to be removed in any industrial context or production process, reducing cleaning time and benefiting from totally dust-free environments.

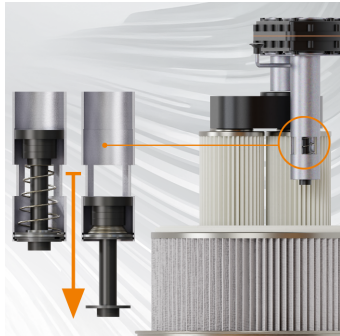
Features



SAFETY
Thermal magnetic circuit breaker



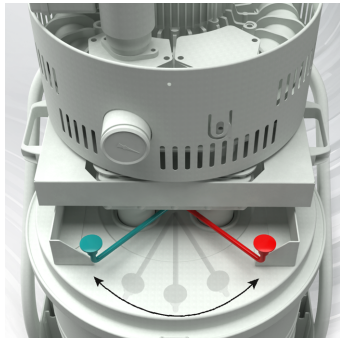
EMPTYING
Collection system with 75L tank



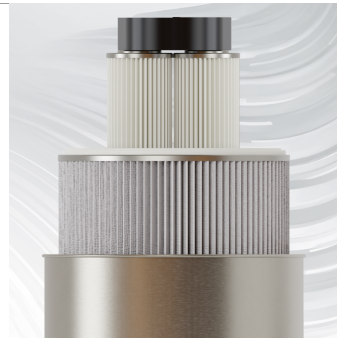
PNEUMATIC-MECHANICAL PISTON
Semi-automatic with pneumatic-mechanical piston.



ENGINE
2,2 - 3 KW Turbine available



FILTER CLEANING
Cleaning system with airflow reversal



FILTRATION
Class M primary filter + optional secondary HEPA filter



Technical specifications

Technical data	STD 400 ATEX 21
MATERIAL TO VACUUM	Dust
MOTORIZATION	Turbine
MARKING	Zone 20/21 - II 2D Ex h tb IIIC T135°C Db IP64
POWER	3,4 kW
VOLTAGE	400 V
FREQUENCY	50 / 60 Hz
AMPERAGE	8,9 A
AIR CONSUMPTION	-
AIRFLOW	320 m3/h 50 Hz
DEPRESSION	320 mBar
MAX DEPRESSION	220 mBar
SUCTION INLET	Type B Tang. 60mm
DIMENSIONS	85x60 h165 cm
WEIGHT	90 Kg
COLLECTION SYSTEM	Barrel
COLLECTION CAPACITY	75 L
LONGOPAC	-
ELECTRIC FLOATER	-
FILTER CHAMBER DIAMETER	Ø 460mm
FILTER TYPE	Cartridge
FILTERING MEDIA AND PROPERTIES	M Conductive Aluminized
FILTER SURFACE	22.000 cm2
FILTER CLEANING	Semi-Automatic - Pneumatic Piston
LIQUID EMPTYING	-
FILTER HEPA	Optional
HEPA FILTERING SURFACE	-