



# TDC PRO ATEX 2-22

MOTORIZATION

**Turbine**

MATERIAL TO VACUUM

**Dust**

FILTER TYPE

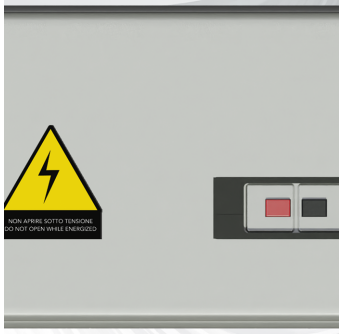
**Cartridge**

FILTER CLEANING

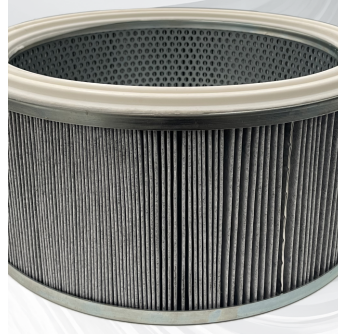
**Semi-Automatic -  
Pneumatic Piston**

The TDC PRO ATEX models are vacuum cleaners suitable for continuous use, 24/7, without the need for special maintenance. The main feature of these machines is their versatility of use, focusing on the suction of both dust and solids.

## Features



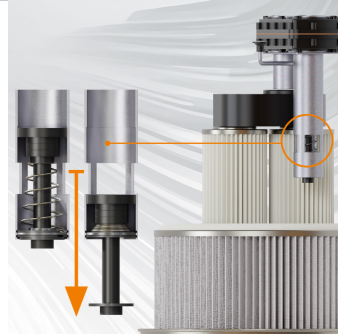
**SAFETY**  
Thermal magnetic circuit breaker



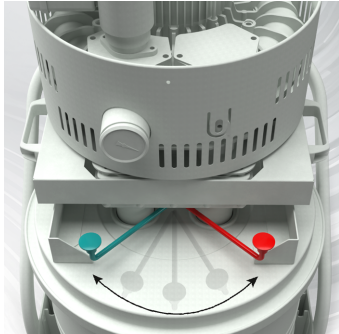
**FILTRATION**  
Secondary HEPA filter (optional)



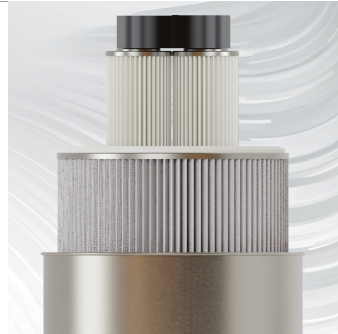
**ENGINE**  
2,2 - 3 - 4 KW Turbine available



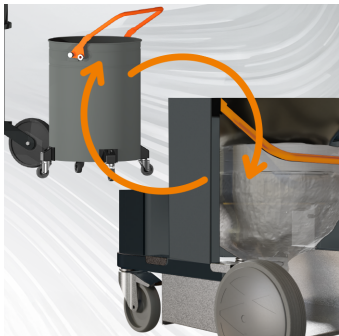
**PNEUMATIC-MECHANICAL PISTON**  
Semi-automatic with pneumatic-mechanical piston.



**FILTER CLEANING**  
Cleaning system with airflow reversal



**FILTRATION**  
Class M primary filter + optional secondary HEPA filter



**EMPTYING**  
Collection system with 100L tank or Longopack



## Technical specifications

Technical data	TDC 22 PRO ATEX 2-22	TDC 30 PRO ATEX 2-22
MATERIAL TO VACUUM	Dust	Dust
MOTORIZATION	Turbine	Turbine
MARKING	Zone 20/22 - II 3G Ex dc h IIB T3 Gc II 3D Ex h tc IIIC T 135°C Dc IP65	Zone 20/22 - II 3G Ex dc h IIB T3 Gc II 3D Ex h tc IIIC T 135°C Dc IP65
POWER	2 kW	2,6 kW
VOLTAGE	230 V	400 V
FREQUENCY	50 Hz	50 Hz
AMPERAGE	16 A	6,7 A
AIR CONSUMPTION	-	-
AIRFLOW	320 m3/h	320 m3/h
DEPRESSION	320 mBar	320 mBar
MAX DEPRESSION	200 mBar	220 mBar
SUCTION INLET	Type B Tang. 60mm	Type B Tang. 60mm
DIMENSIONS	80x67 h174 cm	80x67 h174 cm
WEIGHT	105 Kg	105 Kg
COLLECTION SYSTEM	Barrel / Longopac®	Barrel / Longopac®
COLLECTION CAPACITY	100 L / Longopac®	100 L / Longopac®
LONGOPAC	Si	Si
ELECTRIC FLOATER	-	-
FILTER CHAMBER DIAMETER	Ø 460mm	Ø 460mm
FILTER TYPE	Cartridge	Cartridge
FILTERING MEDIA AND PROPERTIES	M Conductive Aluminized	M Conductive Aluminized
FILTER SURFACE	18.000 cm2	18.000 cm2
FILTER CLEANING	Semi-Automatic - Pneumatic Piston	Semi-Automatic - Pneumatic Piston
LIQUID EMPTYING	-	-
FILTER HEPA	Optional	Optional
HEPA FILTERING SURFACE	-	-