



TDC PRO ATEX 21

MOTORIZATION

Turbine

MATERIAL TO VACUUM

Dust

FILTER TYPE

Cartridge

FILTER CLEANING

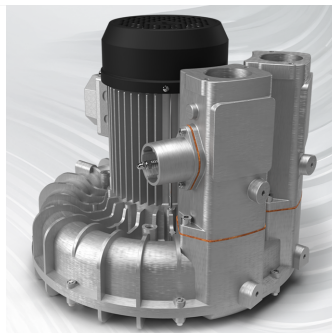
**Semi-Automatic -
Pneumatic Piston**

The TDC PRO ATEX models are vacuum cleaners suitable for continuous use, 24/7, without the need for special maintenance. The main feature of these machines is their versatility of use, focusing on the suction of both dust and solids.

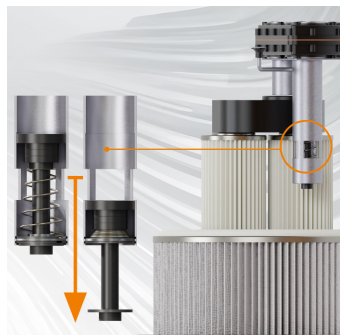
Features



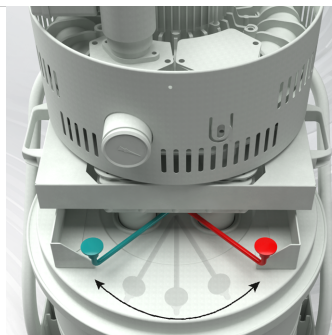
SAFETY
Thermal magnetic circuit breaker



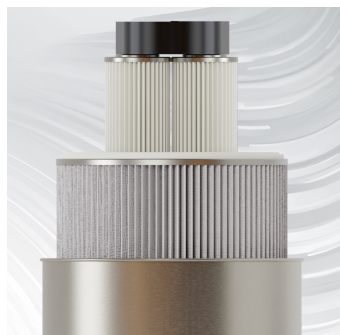
ENGINE
2,2 - 3 - 4 KW Turbine available



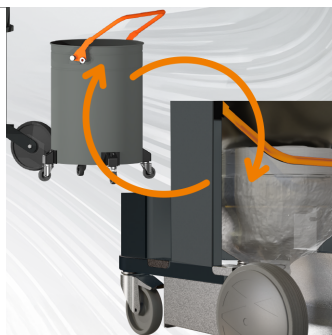
PNEUMATIC-MECHANICAL PISTON
Semi-automatic with pneumatic-mechanical piston.



FILTER CLEANING
Cleaning system with airflow reversal



FILTRATION
Class M primary filter + optional secondary HEPA filter



EMPTYING
Collection system with 100L tank or Longopack



Technical specifications

Technical data	TDC 40 PRO ATEX 21
MATERIAL TO VACUUM	Dust
MOTORIZATION	Turbine
MARKING	Zone 20/21 - II 2D Ex h tb IIIC T135°C Db IP64
POWER	3,4 kW
VOLTAGE	400 V - 50 Hz 220 – 380 - 480 V – 60 HZ
FREQUENCY	50 / 60 Hz
AMPERAGE	8,9 A
AIR CONSUMPTION	-
AIRFLOW	320 m3/h
DEPRESSION	320 mBar
MAX DEPRESSION	250 mBar
SUCTION INLET	Type B Tang. 60mm
DIMENSIONS	80x67 h174 cm
WEIGHT	105 Kg
COLLECTION SYSTEM	Barrel / Longopac®
COLLECTION CAPACITY	100 L / Longopac®
LONGOPAC	Si
ELECTRIC FLOATER	-
FILTER CHAMBER DIAMETER	Ø 460mm
FILTER TYPE	Cartridge
FILTERING MEDIA AND PROPERTIES	M Conductive Aluminized
FILTER SURFACE	18.000 cm2
FILTER CLEANING	Semi-Automatic - Pneumatic Piston
LIQUID EMPTYING	-
FILTER HEPA	Optional
HEPA FILTERING SURFACE	-