



# WM 220 ACD BASIC

MOTORIZATION

**Nr 2 Collector  
motor**

MATERIAL TO VACUUM

**Dust**

FILTER TYPE

**Star Polyester**

FILTER CLEANING

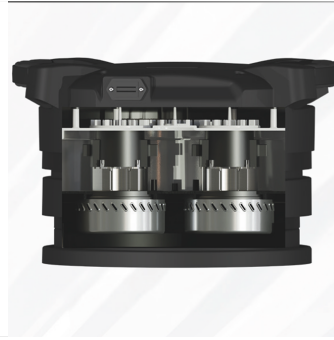
**Manual Shaking**

Combustible dusts can also be found in areas not classified as ATEX, where the mere absence of classification does not eliminate the risk of ignition. Coyncoco ACD extractors offer a safe solution even without regulatory requirements. Thanks to their intrinsically safe design and internal Category 1 (Zone 20) certification. WM 220 BASIC is a compact single-phase industrial vacuum cleaner, ideal for dust extraction in production environments and workshops. Equipped with two by-pass motors with 2200 W, it offers an airflow rate of 340 m<sup>3</sup>/h and a vacuum pressure of 230 mBar. The polyester star filter with a surface area of 13,000 cm<sup>2</sup> ensures excellent filtration capacity, complemented by a manual cleaning system for optimal control. Perfect for non-continuous applications, it ensures ease of use thanks to the quick-release 20-liter tank.

## Features



NEW HEAD  
New and improved head



BY-PASS MOTORS  
Efficient By-pass motors

## Technical specifications

Technical data	WM 220 ACD BASIC
MATERIAL TO VACUUM	Dust
MOTORIZATION	Nr 2 Collector motor
MARKING	ACD
POWER	2200 W
VOLTAGE	230 V
FREQUENCY	50 / 60 Hz
AMPERAGE	9,6 A
AIR CONSUMPTION	-
AIRFLOW	340 m3/h
DEPRESSION	230 mBar
MAX DEPRESSION	-
SUCTION INLET	Type C Cent. 70 mm
DIMENSIONS	60x59 h100 cm
WEIGHT	32
COLLECTION SYSTEM	Barrel
COLLECTION CAPACITY	20 L
LONGOPAC	-
ELECTRIC FLOATER	No
FILTER CHAMBER DIAMETER	Ø 400 mm
FILTER TYPE	Star Polyester
FILTERING MEDIA AND PROPERTIES	M Antistatic
FILTER SURFACE	13.000 cm <sup>2</sup>
FILTER CLEANING	Manual Shaking
LIQUID EMPTYING	-
FILTER HEPA	H13 99,95% MPPS 0,12 µm
HEPA FILTERING SURFACE	-