



## WM 250 ACD BASIC

MOTORIZATION

**Nr 2 Collector  
motor**

MATERIAL TO VACUUM

**Dust and liquids**

FILTER TYPE

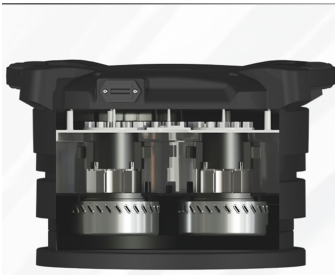
**Star Polyester**

FILTER CLEANING

**Manual Shaking**

Combustible dusts can also be found in areas not classified as ATEX, where the mere absence of classification does not eliminate the risk of ignition. Coyncoco ACD extractors offer a safe solution even without regulatory requirements. Thanks to their intrinsically safe design and internal Category 1 (Zone 20) certification. BASIC WM 250 is the most classic and common single-phase industrial vacuum cleaner. 2 by-pass motors, 50 liter capacity, steel drums and conventional filtration with stellar filter. This model responds to many non-specific applications in the industrial field.

## Features



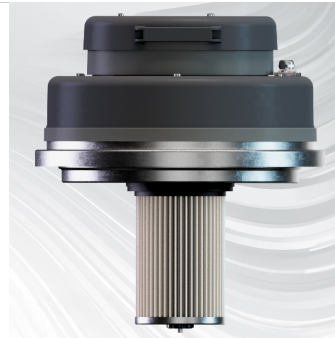
BY-PASS MOTORS  
**Efficient By-pass motors**



ENGINE  
**2 By-pass motors**



EMPTYING  
**Collection system with 50l barrel**



FILTRATION  
**HEPA + antistatic filter**

## Technical specifications

Technical data	WM 250 ACD BASIC
MATERIAL TO VACUUM	Dust and liquids
MOTORIZATION	Nr 2 Collector motor
MARKING	ACD
POWER	2200 W
VOLTAGE	230 V
FREQUENCY	50 / 60 Hz
AMPERAGE	9,6 A
AIR CONSUMPTION	-
AIRFLOW	340 m <sup>3</sup> /h
DEPRESSION	230 mBar
MAX DEPRESSION	-
SUCTION INLET	Type C Cent. 70 mm
DIMENSIONS	54x58 h135 cm
WEIGHT	34
COLLECTION SYSTEM	Barrel
COLLECTION CAPACITY	50 L
LONGOPAC	-
ELECTRIC FLOATER	Optional
FILTER CHAMBER DIAMETER	Ø 400 mm
FILTER TYPE	Star Polyester
FILTERING MEDIA AND PROPERTIES	M Antistatic
FILTER SURFACE	13.000 cm <sup>2</sup>
FILTER CLEANING	Manual Shaking
LIQUID EMPTYING	-
FILTER HEPA	H13 99,95% MPPS 0,12 µm
HEPA FILTERING SURFACE	-